



# VILLAGE ESTATES

• EST.1993 •



93 Main Road, Sidcup, Kent DA14 6ND

Tel: 0208 302 1002

www.village-estates.com

Email: sidcup@village-estates.com



**COMPLETED FORWARD CHAIN**  
**TWO RECEPTION ROOMS**  
**EASY REACH OF A20**

**DOUBLE GATES TO REAR/GARAGE**  
**POTENTIAL TO CREATE**  
**KITCHEN/DINER**  
**DAVID LLOYD LEISURE CENTRE**



**215 Ellenborough Road**  
**Sidcup, DA14 5LB**

**Guide Price £350,000-**  
**£375,000**



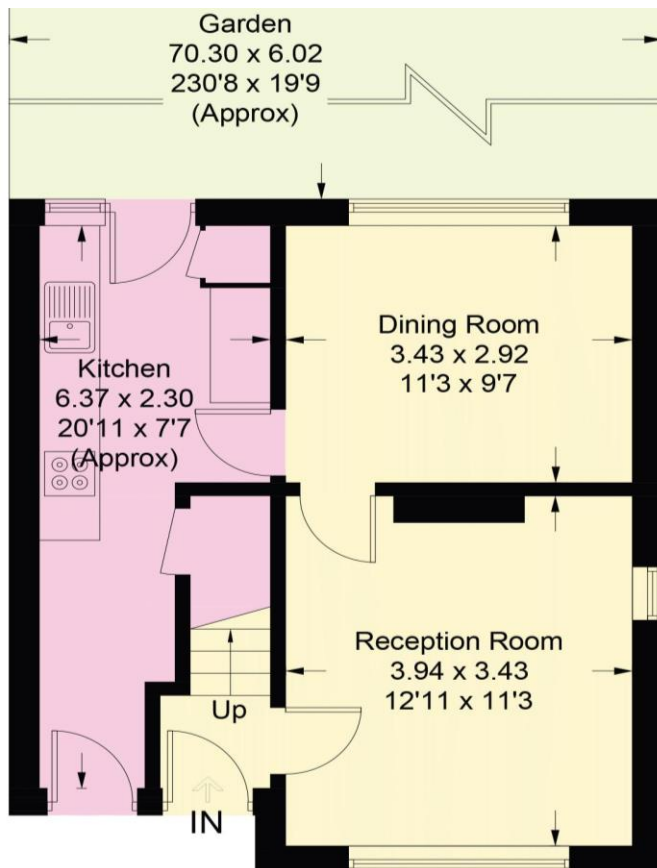
**\*\* Guide Price £350,000 - £375,000 \*\* THREE BEDROOM** end of terrace house conveniently positioned near to local shops, bus routes and **FOOTS CRAY MEADOWS**. We feel this would make an excellent home for a **FIRST TIME BUYER** or growing family with the benefit of two reception rooms.

**EPC RATING: D**

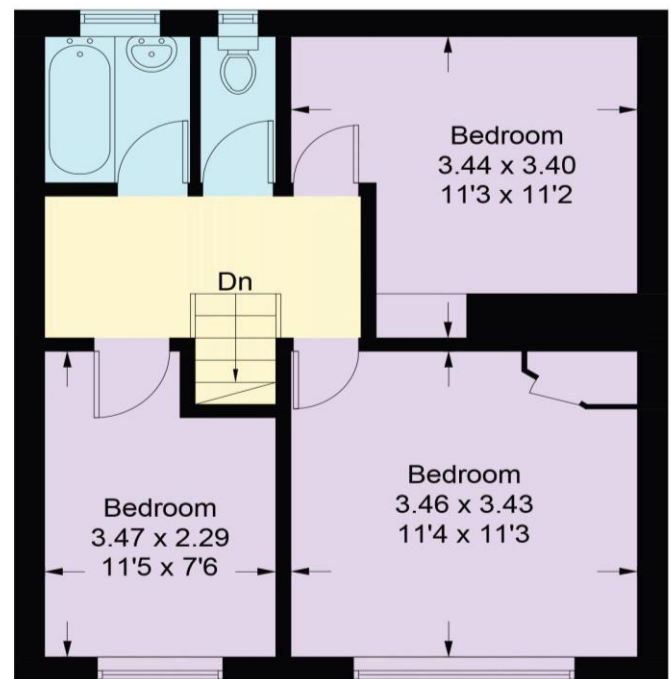
**TENURE: Freehold**

**COUNCIL TAX BAND: C**

**LEASE TERM: Not Applicable**



**Ground Floor**



**First Floor**

**CONSUMER PROTECTION FROM UNFAIR TRADING REGULATIONS 2008**

Please note that any services, heating system or appliances have not been tested, and no warranty can be given or implied as to their working order. You are advised to obtain verification from your solicitor or surveyor. References to the tenure of a property are based on information supplied by the seller. We have not had sight of the title documents and a buyer is advised to obtain verification from their solicitor. Items shown in photographs are not included unless specifically mentioned within the sales particulars, but may be available by separate negotiation. Whilst every attempt has been made to ensure the accuracy of the floor plan contained here, measurements of doors, windows, rooms and any other items are approximate and no responsibility is taken for any error, omission, or mis-statement. We advise you to book an appointment to view before embarking on any journey to see a property, and check its availability. The accuracy of these details are not guaranteed and they do not form part of the contract.